



**South Waikato District Council  
Sportsground Reserves Management Plan  
2020**

**Adopted by the South Waikato District Council  
(04/03/2021)**

# Management of South Waikato District Council Reserves

Reserves within the District are mainly classified as either Recreation Reserves or Local Purpose Reserves, along with one reserve classified as an Historic Reserve under the Reserves Act 1977.

Reserves include neighbourhood and civic parks, rural or scenic reserves, esplanade reserves and sportsgrounds.

Council adopts the Reserve Act 1977 objectives as its guiding principles in the management of its reserves.

The objectives of the Reserves Act 1977 are:

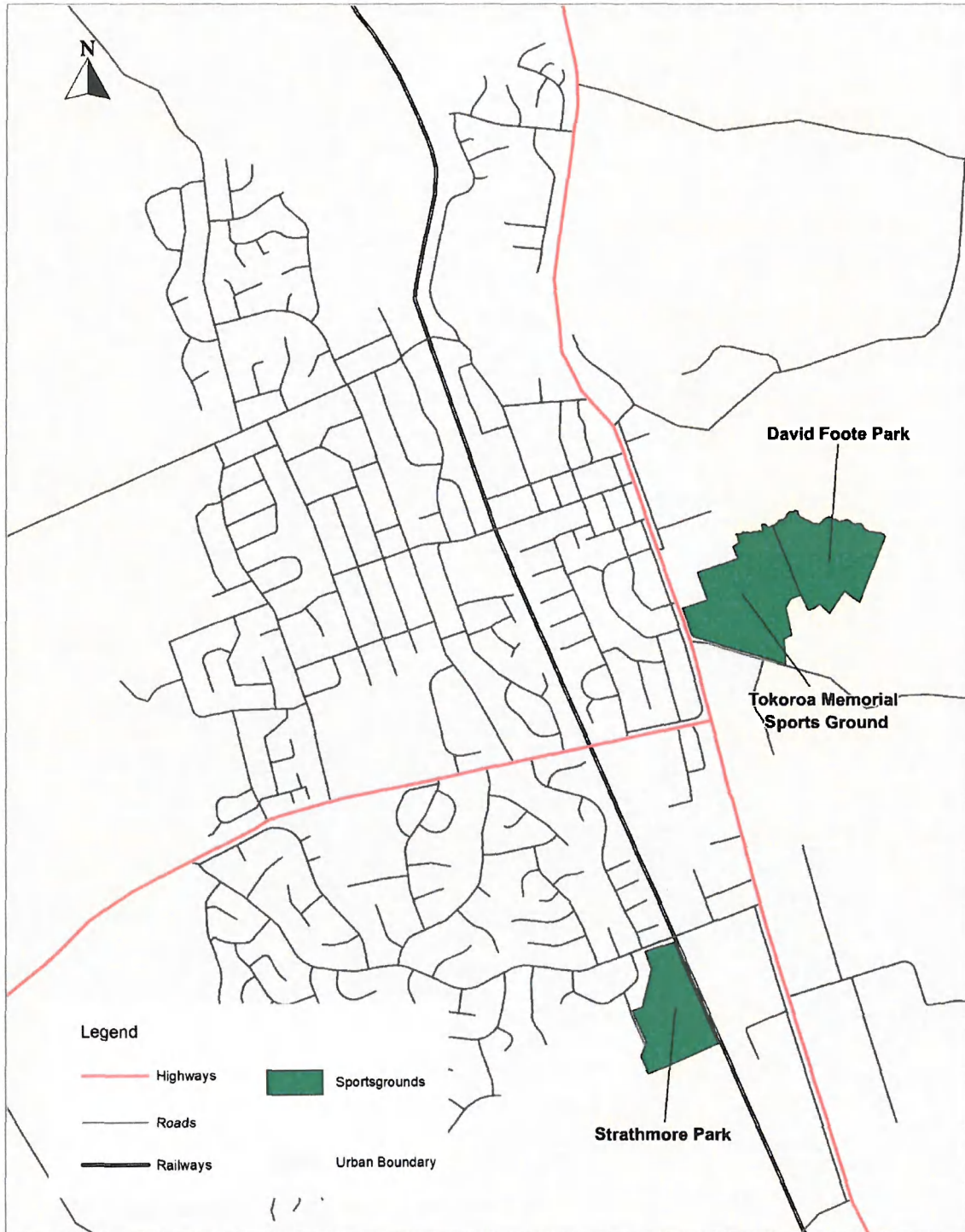
- Emphasise retention of open space for outdoor recreation
- Maximise freedom of access to reserves for all people, rather than just a few
- Encourage multiple use of reserve land and facilities when feasible and appropriate
- Facilitate greater involvement of the public in reserves administration and decision-making


This document contains the individual reserve management plans for the District's sportsgrounds.

*Options listed within the "Future Development Options" segment of the individual reserve management plan documents are provided as various suggestions for further developing or enhancing the reserve for public feedback. Options stated are not to be viewed as a guarantee that these will be implemented by Council.*

# South Waikato Sportsgrounds

<b>Table of Contents</b>	<b>Page Number</b>
Glenshea War Memorial Park	6
Strathmore Park	13
Tokoroa War Memorial Sports Ground	16



<b>Title: Tokoroa Sportsgrounds</b>		South Waikato District Council	
Any dimensions given are indicative and are not of Survey Grade Accuracy.		Date: 5/10/2020	 South Waikato District Council
The information on this map has copyrights, contact the South Waikato District Council before reproduction. The level of accuracy of the information may vary; contact the South Waikato District Council for details. The South Waikato District Council is not responsible for consequences due to inaccuracies on this map.		Author: GIS Team	
		Scale: 1 cm = 50 m	
		Projection: NZTM 2000	





**Legend**

- Highways
- Sportsgrounds
- Roads
- Railways
- Urban Boundary

**Title: Putaruru Sportsgrounds**

Any dimensions given are indicative and are not of Survey Grade Accuracy.

The information on this map has copyrights; contact the South Waikato District Council before reproduction.  
 The level of accuracy of the information may vary; contact the South Waikato District Council for details.  
 The South Waikato District Council is not responsible for consequences due to inaccuracies on this map.

South Waikato District Council

Date: 5/10/2020

Author: GIS Team

Scale: 1 cm = 150 m

Projection: NZTM 2000



## Glenshea War Memorial Park

**Location:** Glenshea War Memorial Park is located on Park Avenue in Putaruru.

**Access:** Access to the Park is off Park Avenue, to the netball courts from the end of Glenshea Street, and to the swimming pools off Reservoir Street.

**Portfolio Designation:** Sportsground.

**Map:**



**Legal Description:**

Section/Lot:	Area (ha):	Classification under Reserves Act 1977 as referenced in the NZ Gazette:
Lot 1 DPS 2946	1.4201	Recreation Reserve
Lot 2 DP 25363	0.8423	Recreation Reserve
Part Lot 1 DP 15603	3.2375	Recreation Reserve

Lot 1 DP 36234	0.325	Recreation Reserve
Lot 18 DP 17150	0.1545	Recreation Reserve
Lot 19 DP 17150	0.1406	Recreation Reserve
Lot 20 DP 17150	0.1095	Recreation Reserve
Lot 21 DP 17150	0.1012	Recreation Reserve
Lot 22 DP 17150	0.1012	Recreation Reserve
Lot 23 DP 17150	0.1012	Recreation Reserve
Lot 24 DP 17150	0.1012	Recreation Reserve
Section 7 Block X Patetere Nth Survey District	0.3131	Recreation Reserve
Lot 1 DP 17150	0.1604	Recreation Reserve
Lot 2 DP 17150	0.1621	Recreation Reserve
Lot 3 DP 17150	0.1012	Recreation Reserve
Lot 4 DP 17150	0.1012	Recreation Reserve
Lot 5 DP 17150	0.1012	Recreation Reserve
Lot 4 DPS 22950	0.0915	Recreation Reserve
Lot 5 DPS 22950	0.1127	Recreation Reserve
Lot 6 DPS 22950	0.1159	Recreation Reserve

**District Plan Zone:** Residential

**Natural and Physical Features:** Glenshea War Memorial Park has a community open space landscape character reflecting the location within a predominantly residential/urban area and the recreational usage of this open space by a wide cross section of the community. The total land area is 7.8961 hectares. Modifications to the original landform reflect the community need for recreation and sports facilities which has resulted in the formation of two quite distinct flat areas of open space. The planting of large deciduous trees, predominantly *Liriodendron tulipifera*, (Tulip Tree) around the perimeter of the open space defines the 1930's development of the Park and reflects the original character and sense of time and history. Its facilities on the top level include two full sized rugby fields with the main grassed playing fields being overlooked by a grandstand with changing and showering facilities. There are also six netball courts and an associated pavilion which are interchanged with tennis courts and separate tennis pavilion. Situated behind the grandstand is a 500,000 gallon water reservoir surrounded by many mature trees which supplies the town with water. Other facilities include an athletics clubroom, and War Memorial Gates which are located on the corner of Glenshea Street and Park Avenue, providing a prominent profile. There are perimeter lights on the sportsfields which are owned and maintained by the District Council, and lights on the



netball courts which are owned by the Netball Club. On the second, lower, block of land which transcends down an incline from the main fields, there is a further playing field with the Putaruru Memorial Swimming Pool Complex adjacent. The pools are contained within a fenced-off area. Its facilities include a large lane pool and small paddling pool, changing room, toilets and showers, staff facilities and shaded terraces. This area of Glenshea Park is largely screened from view from both within the Park and from the adjacent road. Trees and planting along the boundary fence further exclude view giving the site a sense of enclosure. A fence enclosing the whole of the park allows for charging for events, although some adjoining residential properties have private access onto the Park. The Park provides a pleasant amphitheatre and viewing area and is a key feature in providing an open space for recreational purposes.

The large grassed open space of Glenshea Park developed for community use and located within the built-up urban area of Putaruru is the most significant landscape feature. This area of open space is invaluable as a neighbourhood park for the adjacent residents and as a focus and opportunity for local and wider rural community for regular sport, recreation and for special events. The mature trees are also a special feature and provide the spatial definition for the site. These trees add to the amenity value of Glenshea War Memorial Park including shade, changing seasons and a sense of history.

The War Memorial Gates are a further significant feature of Glenshea War Memorial Park. These gates were put in after WWII in the 1950's. Plaques are situated on the left-hand side of the gates and commemorate those soldiers from Putaruru who were killed in action. Those who are remembered are as follows:

T R Baker, R E Hildreth, C McCurran, F S Blackwell, C T Holley, R B McClymont, R.W. Boyes, Hooper D McArthur, J.M. Burgess, J H Howland, A Nicklin, W C Crickett, L D Lory, J S Paton, D P Goodwin, D T Morrison, H L Patton, R H Gillies, C W Misson, F Pepperell, D W Eastgate, L L Marshall-Inman, S H Purchas, J C Donald, E Martin, D R C Rollett, G H Dodds, R A Martin, C H T Sandford, A Heke and L M McCurran.

**Historical /Investment Background:** Glenshea was originally the name of a farm in Putaruru owned by Mr RA Bent. For many years he had allowed the town's people to play sport on a few acres of his land as well as hold the popular annual Farmers' Picnic of the twenties, which were organised by the Putaruru Branch of the Farmers' Union. In March 1930, ratepayers approved a loan of £850 to acquire their own recreational park. Mr Bent sold 8 acres of his farm to the town board and then a further two more acres in 1932. Before leaving the District in 1940 he provided more sections free of charge given to help enlarge the area. The Park was officially opened on Auckland Anniversary Day, 1933. The Park as it was then was not level, but had been cleared and sheep fenced, and had enough room for two football fields. Above the oval was a natural grandstand which provided a vast view over the field. The rugby training shed, which was originally behind the Thames Valley Electricity Power Board office in Glenshea Street, was moved onto the Park under an agreement whereby the Town Board was to administer its use. The grounds were grazed by Mr Bent's sheep when not in use and then later by Henry Lopdell. In 1935 the Town Board converted both of its loans under a government interest reducing scheme so that the original roading loan would be paid off and the Park debt free by 1955. The very first Agricultural and Pastoral (A & P) show was held at Glenshea War Memorial Park in 1936 and was a great success. It coincided with the discovery that the missing trace mineral cobalt would solve the problem of 'bush sickness' on farms. In October of 1936 the Putaruru Board announced plans to raise a 25-30 year loan of £2,000 to level, extend, and terrace Glenshea War Memorial Park. This was initiated by the A & P Society who wanted additions to the Park including integrating areas of certain



adjoining private properties, namely seven vacant lots on Glenshea Street from the corner of Park Avenue, leading down to the sheep pens. The Board had to raise a loan in order to do this and rely on community resourcefulness for the rest. In 1943 the eighth edition of Banbury's Illustrated Series states that Glenshea War Memorial Park was the principle public reserve in Putaruru that showed its importance within the community, especially at that time. One of the highlights of Glenshea's history was the 1953 Queen Carnival which was held to raise money for the development of the Park. The show's events included raffles, stalls, garden parties, auctions, cabarets, concerts, motorcycle sports gatherings, rodeo, minstrel show, dances, fun fairs, bottle drives, sporting fixtures, talent quests, tug'o'war, donkey derby and many other events. In total about £11,000 was raised which meant building of the baths and the laying of the courts could be established.

With the funds raised from the Queen Carnival the Society brought two sections for £123 as well as re-erecting showers, concreting the floor and erecting double doors in the shed. A subsidy was available to turn the Park project into a Centennial Memorial and the Show Society donated the two sections it had bought in December of 1938. Other sections were also donated by other families including Mr RA Bent. Following this the Board closed Glenshea War Memorial Park for development; however, the outbreak of WWII in September 1939 meant the plans had to be put on hold. In 1941, the Town Board decided that the A & P Society should get the use of the Park free of rent until 1968 in lieu of the sections they had donated. In 1951 the A & P Society also donated and planted 80 trees within the Park. The Glenshea War Memorial Park scheme was one of the earliest in New Zealand to be approved and had grown to include basketball (netball) and tennis courts, Memorial Gates and a full-sized swimming pool. The pools were established at the expense of an indoor stadium. The baths were added when emphasis was placed on prevention of drowning especially in rivers and with this the Putaruru Swimming Club was also formed. The actual construction of the baths occurred in 1955. A tiny pavilion was also built due to the fundraising efforts by the Basketball and Tennis Clubs. The baths consist of a main pool being 30m in length and provides 6 lanes for exercise, training and competition swimming. The deep end was formerly a diving pool with a depth of 3.7m and is now used for deep-water activities such as swim survival training and water polo training. There is also a 'learn to swim' pool approximately 15m by 7m. In 1957, a new 500,000 gallon reservoir, over eight times bigger than the old one, was built at the Park to boost both the supply and pressure of Putaruru's clear, clean, water. In 1958 Glenshea War Memorial Park had become too small with two fields and two rugby clubs so it was decided another field should be developed next to the baths, on the lower area. The only problem was that the planned site was on a rocky incline and had to be broken in by blasting it with dynamite. It was also at this time that the Council used a posthole borer to dig drainage holes into the top two fields, which had always been subject to flooding. Covered stand facilities were also built. Park users, service clubs and other volunteers combined efforts to build the concrete terraces, changing rooms and a roof to cover. The exposed end was later covered in with transparent materials by the Putaruru Lions Club. The Athletics Club on Glenshea War Memorial Park was dedicated to the Drummonds to recognise the work they put into the Putaruru Athletics Association. The Tennis Pavilion has been reverted to Council ownership since the demise of the activities on the Glenshea War Memorial Park Courts. There is an informal agreement between the Council and Netball Association for the seasonal use of the facility. Over recent years there has been much concern about the condition of the netball courts on Glenshea War Memorial Park. This has led to new lights being put in 2003 and the courts being resealed in April of 2006. In 1992, new toilets were built which allowed for the demolition of the 'Carriers' toilet block within the

Park in 1994 due to vandalism creating an 'eyesore'. The new toilets are not classified as 'Public Toilets' and therefore are only opened when the park is in use and/or the clubs need additional toilets for users and supporters. Also in 1992, Council allowed the construction of a carpark on the Glenshea War Memorial Park Reserve fronting the Putaruru Squash Club. All expenses were paid for by the Putaruru Squash Club. In 1993 the Putaruru Rugby Football Club moved their games away from Glenshea War Memorial Park. When the South Waikato Rugby Union was running the gate at the Park, the gate takings were between \$200 and \$500 every Saturday within the season. This money was not put back into the club which prompted the Putaruru Rugby Football Club (PRFC) to move to the Nola Block so they could control the gates and use the money to maintain their own ground. In 1994 the caravan park at Glenshea War Memorial Park was de-registered as it did not comply with the New Zealand Electrical Code of Practice, the Camping Ground Regulations 1985 or the Health Regulations 1966. The power boxes were disconnected, toilets and showers not repaired and the ablution block closed. In 1996 the Putaruru United League Club was granted permanent use of Glenshea War Memorial Park from the Council. The second field was fitted with lights and maintenance of the grounds improved. Originally, this club was an association between two existing clubs namely Tokoroa and Putaruru. The Putaruru Club used to occupy the Domain Road Sportsground but started using the top two fields located in Glenshea War Memorial Park. In 1997 extensive work was done on the maintenance of the grandstand which included exterior roofing and sheathing repairs, painting of the canopy walls to the roof line, painting of the exterior corrugated galvanised iron roofing and painting of the exterior corrugated wall sheathing. In 1998 the painting and lining of the changing rooms behind the grandstand and display hall occurred. This work resulted in a great improvement to the facility. Work for this was done by members of the Forestland Rugby League Club with Council providing materials and supervision with the construction. The grandstand building was again upgraded in 2014 with re-roofing completed, and aluminium doors fitted.

In 2015 a concrete path with overhead lighting was installed on the southern end of the Park to provide all weather access between the main carpark and the Netball Courts. This was to encourage court users to park in the large carpark area due to congestion when parking by the courts.

In 2016 play fitness stations were installed around the perimeters of the upper fields.

In 2018 four 'Gynguru' fitness items were installed on the perimeters of the lower field.

In 2019 two mobile soccer goals were provided for use by the Ranger's Football Club who had transferred from Totara Park as their home ground.

In 2020 a drinking fountain was installed by the 'Hub' building on the Park Ave side of the Park.

In 2020 the line of historical Tulip trees adjacent to the Court area were assessed by an arborist and subsequent pruning works undertaken.

**Purpose, Use and User Groups:** The Park and facilities within provide an area for active sport, as well as providing a large area of open green space for informal active and passive activity for nearby residences.

From the early 1930's Glenshea War Memorial Park has been used by a variety of organisations including rugby, tennis, netball, basketball, athletics and the A & P Association. Currently the netball/tennis courts are used on a seasonal basis the Putaruru Netball Club. The Putaruru Athletics and Harrier Clubroom is based at the Park,

as well as the Putāruru Squash Club, whose building is accessed from Overdale Road. The sports fields are well utilized for athletics, rugby league, football and KiwiSport activities including junior cricket, touch and soccer. The KiwiSport Regional Partnership fund is a government funded initiative that helps to get more school-aged children participating in organised sport, and is run by Sport Waikato in the South Waikato district. Local schools also use the Park to host their school cross country events annually.

The Park is also used for community events, and up until 2015 was where the Agricultural and Pastoral Society's A&P Show was held in Putāruru. The Putāruru Water Festival is now held at the Park each year. The Park has also been used to hold circus events in recent years, on the lower field.

The baths are also used by schools and the community over the summer season.

**Leasee:** Currently the Park is not leased out to any users. Fees and Charges may be applied for events.

**Reserve Management and Maintenance:** Glenshea War Memorial Park is administered solely by the South Waikato District Council. Maintenance of the reserve is managed by the South Waikato District Council.

Turf is maintained to keep grass height between 35mm and 75mm, Sports turf is maintained to keep grass height between 25mm and 40mm (Cricket) and between 40mm and 60mm (rugby/league).

Garden maintenance includes maintaining of mixed border and shrub areas and native NZ and non-native plantings along stream edges.

Maintenance of park furniture and play equipment includes to be kept in a clean and in a safe condition.

Hard surfacing to be kept clean, safe for users and weed free.

Litter control to be maintained to an appropriate level.

Toilet cleaning to be carried out to an appropriate level as per contract.

**Future development options:**

- In the 2020/21 financial year as part of preliminary work to the resurfacing works root barrier material will be installed to prevent the roots of the Tulip trees growing under the court areas;
- Resurface the asphalt courts with a cushioned rubber surfacing product;
- Construct a skate park on the Lower field;
- Install additional floodlights over the courts;
- Install a drinking fountain within the courts area;
- Install replacement timber bollards along the perimeter of the grassed median at the courts area to prevent undue compaction by vehicles to the detriment of the historical line of Tulip trees;
- Fell the mature Tulip trees located within the median on the eastern side of the Park (adjacent to the netball court area);
- Consider usage of courts area and quantify need for installing a full-size basketball court on the Lower field;
- Install a playground on the Lower field;
- Remove the narrow uphill concrete path that leads from the Squash Club into the Park, remove bamboo within the area and construct a metalled path at ground



level along the eastern perimeter of the lower field through to the entrance gate into the netball court area;

- Plant bank behind houses on western side of the lower field with bulbs to naturalise as a woodland area;
- Complete pruning works on trees within the Park;
- Set up the Park as a "Smart Playground". This provides opportunity through digital apps to either turn a normal park's open space into a digital fantasy land or make-believe scenarios where younger children use the play equipment to complete tasks under parent's supervision holding the phone. This creates a means to connect physical activity and the use of screens, providing a fun way for young children to be active;
- Continue to maintain at current level of service.

## Strathmore Park

**Location:** Strathmore Park is located on the southern outskirts of Tokoroa.

**Access:** The Park can be accessed via Balmoral Drive or Benalder Crescent.

**Portfolio Designation:** Sportsground.

**Map:**



**Legal Description:**

Section/Lot:	Area (ha):	Classification under Reserves Act 1977 as referenced in the NZ Gazette:
Lot 1 DPS 13001	3.2830	Recreation Reserve
Lot 1 DPS 16787	6.9621	Recreation Reserve
Lot 1 DPS 20143	0.4445	Recreation Reserve

**District Plan Zone:** Residential

**Natural and Physical Features:** The wide expanse of level mown grass for the sports fields and the surrounding mature trees are the most significant landscape features.

Total land area is 10.6896 hectares. Mature trees also line the entry road and carpark and provide some definition within the larger area of the Park.

Strathmore Park has an open space, active recreation landscape character. The development of level playing fields, athletic field, carparking and two sports pavilions confirm this theme. The large scale of the sporting facilities, range of different sporting codes and its visible location on Balmoral Drive provide a sense of scale which is consistent with a sports ground for the wider South Waikato District as well as the local community.

Strathmore Park is one of Tokoroa's premier reserves and a key recreational facility within the district. Of moderate visual appeal the land consists of two flat blocks of land which can be divided into three distinct areas. Its facilities include six standard fields, training lights, grass tracks, long jump pit as well as two clubrooms situated at either end of the reserve. Situated on the south west end of the reserve is the Tokoroa Associated Football Club which overlooks the main soccer fields. Near the Balmoral entrance of the reserve is the Tokoroa Athletics Club which overlooks the athletics track and field facilities. Parking areas are located adjacent to the Athletics Club and another large sealed car park situated in the middle of the reserve. The eastern boundary of the reserve is adjacent to railway tracks whilst on the western boundary is residential housing and farmland.

**Historical /Investment Background:** In 1971 the Tokoroa Parks and Reserves Committee agreed to recommend to the County Borough Council that an offer from NZ Forest Products Limited to sell the land adjacent to Strathmore Park be accepted. The company had asked \$18,000 for the 18 acres inclusive of buildings (South Waikato News 1971). This was to be the site of Strathmore Park. The Park takes its name from the Strathmore District in Scotland and was named by Scottish-born, Sir David Henry. The Tokoroa Amateur Radio Club was situated adjacent to the railway tracks on the reserve for some time in an old concrete building. Because of the high level of vandalism it attracted, in 1988 the Club relocated to Ireland Reserve on Baird Road. The former Radio Clubrooms were demolished in 1995. From 1995 to 2002 the South Waikato District Council promoted the relocation of the Football Association to the Tokoroa Memorial Sportsground. However due to the renewed level of interest in soccer and the subsequent increase in the use of the park, this proposal was abandoned. In 2007 the existing timber post and wire fence along the Balmoral Drive frontage of Strathmore Park was replaced. This new fence includes a pedestrian access at the western end to improve public access to the park. At the same time, Council removed and pruned some of the trees to improve the views into and out of the park. A residential subdivision is planned for the area adjacent to the park to the west. The park will become a little more hemmed in but will also attract more informal use. The entrance road to the soccer club building will be shared with the entrance to the subdivision.

In 2012 a 2-pan toilet block was installed.

In 2016 a steel bar gate was installed at the Benalder Crescent entrance driveway for security reasons. This is unlocked and locked daily by Council's security contractor.

In 2019 the football goals were replaced with mobile goals, and concrete pads installed for storing goals.

In 2019 re-metalling and sealing works were completed on the driveway entrance and carpark area where the Football club is based.



In 2020 the fading name signs were replaced, and timber bollards and bar gate installed to prevent vehicle access from the main carpark down to the eastern side of the Park where litter was being dumped regularly and turf damaged.

**Purpose, Use and User Groups:** The Park and facilities within provide an area for active sport, as well as providing a large area of open green space for informal active and passive activity for nearby residences. Users include members of the athletics and football clubs, and local schools for weekend junior soccer. The Park is also used from time to time for training purposes by other codes.

**Leasee:** The Tokoroa Associated Football Club have a lease agreement in place for the use of land for their clubroom.

The Tokoroa Athletics Club hold a lease agreement for a term of 21 years, expiring in 2021.

The currently unused field on the south-eastern boundary is leased by the adjoining landowner for grazing on a year by year term.

**Reserve Management and Maintenance:** The Park is administered solely by the South Waikato District Council.

Maintenance of the reserve is managed by the South Waikato District Council.

Turf is maintained to keep grass height between 35mm and 75mm, Sports turf is maintained to keep grass height between 25mm and 40mm (Soccer).

Garden maintenance includes maintaining of shrub gardens and native NZ and non-native plantings.

Hard surfacing to be kept clean, safe for users and weed free.

Litter control to be maintained to an appropriate level.

Toilet cleaning to be carried out to an appropriate level as per contract.

#### **Future development options:**

- Continue to maintain at current level of service;
- Install bench seats on field perimeters;
- Install a barbeque /shelter unit;
- Utilise the currently grazed unused field (1.274ha) for a fenced dog park:



- Continue to plant specimen trees along field perimeters;
- Complete pruning works on trees within the Park.

# Tokoroa War Memorial Sports Ground/David Foote Park

**Location:** Tokoroa War Memorial Sportsground and David Foote Park are located on Mossop Road, Tokoroa.

**Access:** Access can be gained from Mossop Road, State Highway One (pedestrian only).

**Portfolio Designation:** Sportsground.

**Map:**



**Legal Description:**

Section/Lot:	Area (ha):	Classification under Reserves Act 1977 as referenced in the NZ Gazette:
Lot 1 DPS 19497	2.8261	
Lot 1 DPS 8069	2.9567	
Part Lot 3 DP 23421 & Part Lot 4 DPS 4625	16.0857	Recreation Reserve
Lot 3 DPS 4625	2.8404	
Lot 1 DP 33166	0.7570	
Lot 6 DPS 2424	7.1766	

Lots 4 & 5 DPS 2424	0.1758	
Lot 3 DPS 2424	0.3847	
Lot 2 DPS 35656	0.0392	
Lot 3 DPS 27348	0.4253	
Lot 3 DPS 16048	0.1110	
Section 82, Block VIII, Patetere Sth Survey District	0.6247	

**District Plan Zone:** Residential

**Natural and Physical Features:** The Tokoroa war Memorial Sportsground and David Foote Park complex has a high profile, multi-purpose recreation reserve landscape character. It is a built environment which has been highly modified from its original natural state.

Its central location, proximity to State Highway One (SH1) and the significant scale of the Park and sports facilities makes this a very prominent and significant amenity for Tokoroa and the South Waikato community at large.

Within the overall Sportsground there are smaller landscape character areas which reflect the different uses of the site. Large grass sports fields and Oval are located to the east, with hard courts and associated structures for tennis and netball along the SH1 boundary adjacent to the urban centre of Tokoroa. The north edge of the site is bounded by the Whakauru stream.

Tokoroa War Memorial Sportsground /David Foote Park is one of South Waikato's premier reserves and a key recreational facility within the District. Of moderate visual appearance the land consists of large blocks of rolling flat land which consists of differing levels, especially so in the north east corner where Memorial Sportsground changes into David Foote Park. The Reserve's facilities include a range of playing fields, hard courts, clubrooms and services. These facilities have developed in a rather ad-hoc manner from what was originally an Agricultural and Pastoral Association showground. The annual Agricultural Society's A & P Show until recent years was an important yearly event with the existing central focus for the show and for the Park itself being "The Oval". The Oval is a traditional elliptical show ring within an artificial basin that provides a sloped perimeter for viewing. On the eastern side of the Oval the South Waikato Sports and Events Centre complex is located, this is a two indoor court facility with indoor hard floor area, changing rooms, conference facilities and reception areas. Between this building and the Oval is a three-tiered seating area providing spectator seating for matches on the Oval. The Oval is surrounded by a formal planting of both mature and young trees and it contains the main playing field for the Park.

Immediately north of the Oval is the Ex- Tokoroa Pirates Rugby club clubrooms. Rugby League relocated to the Tokoroa Memorial Sportsground in 2003 from James Higgins Park, Tokoroa. Adjacent to the south- east corner of the Oval are the Southern United Rugby Football Club clubrooms. The Tokoroa Rugby Club and Tokoroa Pirates Rugby Club amalgamated in 2000 to form the Southern United Rugby Football Club. In this same vicinity are the public toilets/changing rooms block Beyond this group of buildings are five rugby and rugby league fields.

Immediately south of the Oval is the former Tokoroa Axemen's Association clubrooms and chopping ring. This building has now moved under the control of the Council and is



now a shared facility for several groups including the Axemen's Association, Rugby Referees and the Highland Pipe band. Beyond this is a concrete pad with removal fence rails that can be used for tying up horses for Polocrosse events.

To the south west of the Oval are the clubrooms and courts that are shared by the netball and tennis clubs. The hard courts front onto SH1. The former Tokoroa East Bowling Club greens and building were also situated next to the courts and faced onto SH1.

Thirty metres from the intersection of SH1 and Mossop Road, on Mossop Road, is the Memorial entrance to the Park. This entrance is set back 40 metres from the road edge. Further east is the Tokoroa High School Old Boys Rugby and Sports Clubrooms and behind this building was the location of the Tokoroa Highland Pipe Band before this building was removed from the park, this building had also been the old Swimming Club building.

Eighty metres beyond the Mossop Road carpark is the road entrance to David Foote Park. On the east side of David Foote Park the access way is an area of land currently leased and used by the Greyhound Racing Club. At the end of the access way are the clubrooms of the South Waikato Cricket Association. The Park consists of three main cricket fields and/or five business house fields. The boundary between the Memorial and David Foote Parks is delineated by a shelter belt. The northern boundary is the Whakauru stream. In the north east corner of David Foote is the entrance to Cougar Park, the new mountain biking facility. Located to the east of the carpark is the Park's storage shed and compound, a facility that was added to the Park in 2012 and located in front of this building is a flat grass area used by the Tokoroa Dog Agility Club as a training area. This area is lit for use by the club in winter. A single unisex toilet facility is also located in the carpark next to the Cricket Club, this facility is available for use by users of the Park.

**Historical / Investment Background:** In 1952 the only outdoor sports facilities available in Tokoroa were two tennis courts that were in a poor state of repair. Football and hockey had formerly been played in farmers paddocks, but this land was no longer available. It was anticipated that something must be done urgently to make grounds available for football, hockey and netball with population growth mushrooming in Tokoroa. The Tokoroa War Memorial Sportsground Committee was formed and an area of approximately 7 hectares was set aside for a Sportsground.

The decision to develop the area containing approximately 17½ acres situated on the corner of the Main Highway and Mossop Road as a sportsground was taken at a public meeting held in the Fire Brigade Hall on 15 September 1952. The Sportsground was opened on 17 October 1953.

The Oval was built to international standards with the capacity of seating 8,000 spectators. Rugby, league, soccer, hockey, cricket and athletic meetings have been held on the Oval since the first day of opening.

The Government sanction for the scheme as a district World War II Memorial was obtained and qualified for a subsidy of a pound per pound status. This included the manufacture and construction of the Memorial gates, a considerable amount of fencing and construction of goalposts.

The Tokoroa War Memorial Sportsground was opened by Major-General Sir Howard Kippenberger, KBE, CB, DSO, ED, the Dominion President of the Royal New Zealand Returned and Services' Association (RSA) at that time, at 2.00 pm on 17 October 1953 on

the Oval. Major- General Kippenberger was born in 1897 and served as an eighteen-year-old in the First World War in Europe and later commanded the 2nd New Zealand Division in World War Two.

The Tokoroa War Memorial Sportsground is named in honour of the "fallen" during the Second World War. This Park was extended by the Agricultural and Pastoral (A&P) Association in 1968, when it donated seven acres of land to the Matamata County Council. The donation was on the understanding that the A & P Show could have its use, and that of the adjoining Memorial Sportsground recreation reserve, for one week each year at no cost, to hold their annual show.

It is recorded that these seven acres were originally donated to the A & P Association on 18 June 1957, as a gift from Virginia Mossop. Hence, seven acres of the present Sportsground was indirectly a gift from the Mossop family to the local people. The Mossop Gates to the Sportsground are a memorial to the Mossop family.

Approximately 2.5 hectares of the land was reasonably flat, the rest was undulating and had an open water course running through it. The whole area was pock marked with sink holes (tomos). The most undulating area was unusable in its natural state and lent itself to forming a sunken oval with banked sides. This was defined as the main ground which dictated the location of the then main pavilion and associated facilities.

The initial plans that were prepared showed the 'Oval' and allowed for an auxiliary football field and a hockey field abutting the Tokoroa Road. Bowling greens, croquet lawns and combined netball and tennis courts were shown adjacent to the main Taupo Road (SH1). Memorial gates were shown facing the main Taupo Road with an access road into the pavilion. Two separate areas were set aside for the baths.

The Committee decided to have local contractors carry out the earthworks as their contribution and it was anticipated that the new grounds would be ready for the winter of 1953. As Tokoroa was a major sawmilling area, it was decided to form a small secondary banked area for a permanent chopping ring and suitable amenities. The local contractors, recognising the urgency, entered into the spirit and made their equipment available on the weekends. Work was placed under the supervision of Mr JH Chambers who acted as a consultant.

The Oval was formed at 155m x 90m and fill was heaped up around the outside to form a banked area. The secondary fields came to 137m x 137m and the bowling greens, croquet lawns and netball courts took up a further 48m x 110m.

It was noted in the reports that eight very bad tomos needed consideration to provide a final safe foundation for the basketball/bowling green area.

The area adjacent to the Tokoroa Road which would form the secondary fields provided fill to cover the watercourse which was piped. Fill was also placed alongside the road to form a parking area for the baths. Rhyolite rock was provided for the base of the netball courts, the pavilion and the internal system.

The Sportsground buildings consisted of a main pavilion, a combined building for change rooms for hockey, chopping contests or football training, a tennis/netball pavilion and a small storage shed. Extra facilities for the A & P Association, fences, power and water supply and the Memorial Gates were provided. Most of the labour was voluntary and materials, with the exception of joinery and roof trusses, were all donated. Public opinion was that when all these works were completed, any funds left would go towards a swimming pool.

Originally netball/tennis began operation with two courts and a small shed – an old house from Atiamuri later replaced the shed. Over a period of time two unused bowling greens and two Council houses have been replaced with further netball/tennis courts.

In July 1954, the Committee requested that plans be prepared for a 34m x 15m pool with depths varying from 1m to 1.25m at halfway and continuing at 1.25m thereafter. The pool was constructed using volunteer help and local contractors and was officially opened by Sir David Henry, the local Kinleith mill's Director of Forest Products from 1936 to 1963 on 31 March 1956.

The Town Committee used to hold its meetings at the pavilion of the Memorial Sportsground until 1957, when it became necessary to expand accommodation to allow room for a branch county office.

In October 1957, the Committee wrote to Matamata County Council to recommend that matters affecting the grounds should, as with all matters in Tokoroa, go through the Town Committee. The letter also pointed out that Mr Mossop recently deeded to the local A & P Association an area of 3 hectares immediately adjacent to the Sportsground on the eastern side. This area was designated for purposes of showground's for the A & P Association and for recreational use by the people of the district. As this area was inadequate for an A & P Showground, the committee and the A & P Association decided that resources should be pooled for the mutual benefit of all concerned. The result of this move was the Tokoroa A & P Association Empowering Act of 1968. The land was transferred to Council on the condition that the Association continued to have the use thereof and of the adjoining Sportsground for a number of days each year without charge. Council agreed to pay compensation to the Association for the land if at any time the Association decides to change the venue of its shows and other activities.

In April 1985 a letter was received from the South Waikato Cricket Association and the South Waikato Hockey Association requesting that the Tokoroa Borough Council look at developing an existing stockcar area and adjacent lease land for the use of both codes. This development commenced in September 1985 and provided an area for four international and three full sized fields for soccer/hockey, sufficient area for business house cricket, and a new No.1 grass wicket separate from other areas.

The existing hockey/cricket building was transported from its Mossop Road site on to its present site. Council assisted financially to provide public toilets to be attached to the building. From the time of construction these toilets could be accessed from outside by spectators through the pavilion. In May 1988, Council named the area David Foote Park in honour of its former Deputy Mayor and Chairman of the Parks and Reserves Committee.

In the 1990's a Sportsground Committee representing all sports on the Park met regularly for several years and made recommendations to the District Council about development and maintenance issues. The Park was then managed by the South Waikato Sports and Leisure Board Trust on contract to the South Waikato District Council for a number of years, and also provided strategic oversight to the development of the Park.

In 2012 the management and maintenance of the Park reverted back to Council. The South Waikato Sports and Leisure Board continues as a charitable trust and continues to administer the Oval fence advertising with revenue used within the Park for capital projects.

East on Mossop road was the Tokoroa Swimming Pool and an associated carpark. The pool was decommissioned in 1996 after a new indoor heated pool was opened in Torphin Crescent.



In 1998 a private property (Mossop Field) was bought and included in the Reserve. It initially separated the access way from the Tokoroa War Memorial Sportsground. The intention for the future was for further inclusion into the Park.

In 2001 the Tokoroa Rugby Club and The Pirates Rugby Club went through a process of amalgamation. They now field teams under the name of Southern United Rugby Football Club (SURF). There was also the suggestion that the Tokoroa High School Old Boys would join, however this did not eventuate.

Also in 2001, the old Memorial entrance way was converted to a pedestrian access way when the new entrance to the Tokoroa War Memorial Sportsground was completed.

The relocation of Pacific and Forestland Clubs from James Higgins Park occurred in 2002 when the "new" league building (ex-Pirates Rugby Club) passed to the ownership of New Zealand Rugby League. This was later transferred to Council ownership in 2013.

In 2002 alterations were also made to the public toilets at the Memorial Sportsground.

In 2004 the committee and members of the A & P Association donated their time, labour and machinery to develop Mossop Field into an area suitable for equestrian events and or extra playing fields. Development was first proposed by the South Waikato Sports and Leisure Board in order to accommodate the transfer of Rugby League to the Sportsground. The intention was to turn Field 7 around so that it would run parallel to the A & P Building and extend a small way into Mossop Field, and alongside it would run Field 8, which required the removal of the A & P store shed and bailing system to enable sufficient room. The South Waikato Sports and Leisure Board was a Sportsground Committee that was formed in the early 1990's representing all sports on the Park who met regularly for several years and made recommendations to the SWDC about development and maintenance issues on the Park .

In 2005 and with the consent of the SWDC and the Royal New Zealand Returned and Service's Association the old memorial gates located at the corner of Mossop Road and State Highway One were removed and replaced with a new memorial plinth that incorporated the three existing memorial plaques, and a new plaque to commemorate VJ Day.

A further 200 metres east down Mossop Road is the main entrance to the Tokoroa War Memorial Sportsground. Just east of the main entrance is the former Tokoroa High School Old Boys Rugby and Sports Club clubrooms. The carpark in front of these clubrooms was the original carpark for the old town baths.

In 2011 Council sought resource consent to construct and operate the South Waikato Sport and Events Centre in the Tokoroa War Memorial Sportsground, Tokoroa. The centre had been planned for more than ten years to provide an appropriate venue for sport, community and business events in Tokoroa.

The new Centre would provide three distinct spaces, around a central core of offices, toilets and changing rooms, namely a meeting function rooms for up to 300 people, a flat floor space for gymnastics, judo, etc and an arena for court sports, with permanent seating for 114 people, but capable of seating some 560 in tiered seated or a maximum of 1000 on the flat floor. The existing carpark would be re-developed for 122 cars, and new landscaping established. The one-way access around the Oval would be replaced with direct access to the western and eastern sides from a new T-intersection at the south end of the Oval. A new changing block would also be developed separately to replace the existing block and the grandstand facilities. With resource consent granted the Sports and Events Centre and associated carpark, lighting and landscaping were

constructed and opened officially on 1st December 2012 by the mayor at the time, Dr Neil Sinclair, ONZM assisted by Miss Kaesha Nairn, granddaughter of Mr Bruce Nairn, a member of the South Waikato Sport and Leisure board and part of the project control committee (with Council). He was a driving force behind the Event Centre concept.

In 2014 a replacement electronic scoreboard was installed at the northern end of the Oval.

Additional bins and bench seating were installed in 2015, and the fencing removed and replaced with timber bollards and chain gates around the fields.

In 2016 six portable grandstands were provided for the court area.

In 2016 and 2017 the steel rugby/league and soccer goals were replaced with aluminium goals.

In 2019 the floodlights over the rugby/league fields were replaced with LED lights.

From late 2014 a plan to rationalise the buildings currently located on the sportsground was developed by Council and work on this process has since proceeded. Initial buildings first mooted for removal were the former commentary box and first aid building located on the Oval's eastern side embankment. The removal of these two buildings was completed in June of 2015. Further buildings that have been removed include the 'A' Frame building which has historically been the home of the Rugby Referees and the former town bath clubrooms which had become the home of the Tokoroa Highland Pipe Band. A decision was made to retain the Axemen's clubrooms, so as to relocate these two groups into this building which would then be under the control of the Council.

After a short consultation period with the affected parties an agreement was reached where the two aforementioned buildings would be removed from the Park and the groups relocated into the Axemen's building in which some refurbishments were undertaken. The refurbishment work on this building was undertaken in November of 2015 and the two buildings were removed in August 2016.

Also removed at this time was the former East Bowling Clubroom and Greenkeeper's building, and the storage shed which was re-located to the Tokoroa Community Gardens for their use. As the site has frontage onto State Highway 1, it was considered that opportunity existed to create greater visibility for passing traffic to the Sports and Event Centre complex as well as utilising the space for passive or active recreation and pedestrian access. The site was levelled, tidied, seeded with grass and unwanted vegetation and fencing was removed. A gravel path was installed in the interim from SH1 to the edge of the Event Centre car park, with boulders across the SH1 edge to deter vehicular access. In 2017 Council worked on developing a concept plan for the Entrance way project which involved community consultation. The concept plan was approved by Council, and included the instalment of a junior playground, bench seating in paved areas, bins and picnic tables and landscaping.

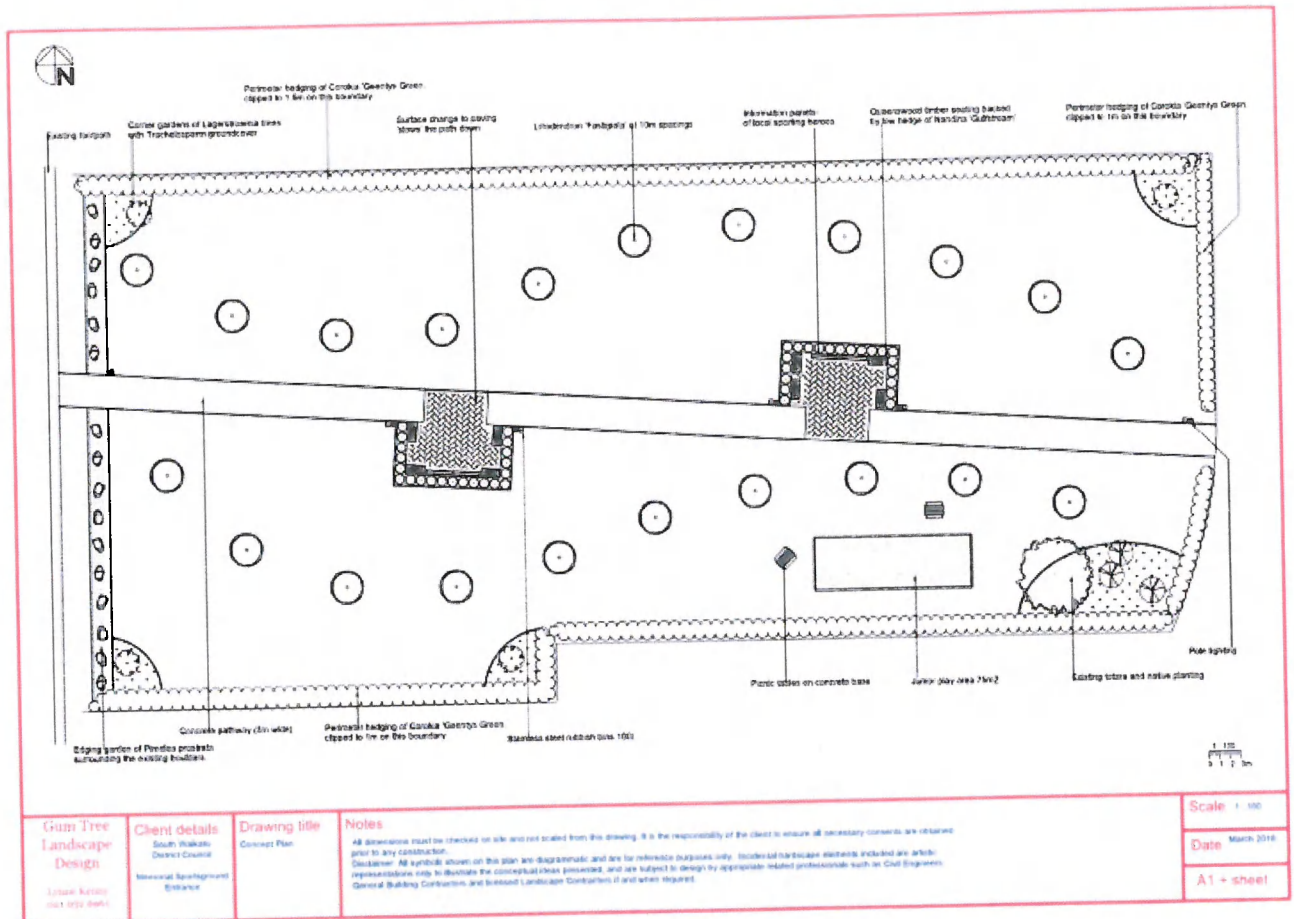


**Figure 1: Former East Bowling Club site, looking from SH1.**



**Figure 2: Fence and vegetation on SH1 boundary prior to removal**





**Figure 3: Concept Plan for the Entrance way project.**

The installation of the Junior playground module, swing set and landscaping works were completed in 2019, along with timber bollarding of the carpark end of the entrance way area. In 2020 a wider aggregate path replaced the metaled path and the paved seating areas, seating, picnic tables and litter bins were installed.

A drinking fountain was installed adjacent to the courts in 2020.

**Purpose, Use and User Groups:** The reserve and facilities within are an area for active sport and recreation, providing a large area of open green space. It is the main focus for sport, recreational and community activities both within the immediate community of Tokoroa and the wider South Waikato District. The reserve's facilities have been developed specifically to cater to the demands of the developing sports wellbeing and cultural interests of the town. The reserve also provides a venue on which events such as circus shows can be held and at times other events that wish to charge an entrance fee for attendance.

Over the years, the following groups have made up the formal users of the Park. Most have specific facilities that are either leased from Council or developed for themselves on land leased from Council.

Currently, those that remain utilising the Park are as follows:

- South Waikato Cricket Association
- South Waikato District Highland Pipe Band



- South Waikato Rugby Referees Association
- Southern United Rugby Football Club
- Southern United Rugby Football Touch Module
- Tokoroa Axeman's and Bushcraft Association
- Tokoroa Gymnastics Club
- Pacific and Forestland Rugby League Club's
- Tokoroa Mountain Bike Club
- Tokoroa Netball Centre
- Tokoroa Tennis Club
- Tritons Rugby Football Club
- Tokoroa Blades Athletic Club
- Greyhound Track
- Tokoroa Canine Association
- Tokoroa Dog Obedience Club

The following groups pre-book space required at the Park to stage their events:

- Primary School sports days
- Polynesian Festival
- Christmas in the Park: organised by the combined churches of Tokoroa
- Timberlands Pony Club: North Island team events
- Tokoroa Canine Association's annual two -day show
- Motor Home Clubs: Weekends away
- The Targa Rally: used as a pit stop area
- Putāruru/Tirau Polo Crosse Club
- South Waikato Super Sports

**Leasee:** The current lease or Licence to Occupy agreements are in place:

- South Waikato Gym Sports Incorporated (SWS&E Centre), 3-year term, with right of renewal, expiry June 2021
- South Waikato Cricket Association, expiry March 2021
- Southern United Rugby Football Club,
- Tokoroa Agricultural and Pastoral Society, 30-year term, expires May 2047
- Tokoroa Greyhound Racing Club, 15-year term, expires November 2024
- Tokoroa Axemens and Bushcraft Association (Axemens Building), 5-year term, free occupancy for 4 days per annum for 5 years, expiry May 2020
- South Waikato Rugby Referees Association, 5-year term, Expiry November 2020

**Reserve Management and Maintenance:** The reserve is administered by the South Waikato District Council.

Maintenance of the reserve is managed by the South Waikato District Council.

Turf is maintained to keep grass height between 35mm and 75mm, Sports turf is maintained to keep grass height between 25mm and 40mm (Cricket/Soccer) and between 40mm and 60mm (rugby/league).

Garden maintenance includes maintaining of mixed border and shrub areas and native NZ and non-native plantings along stream edges.

Maintenance of park furniture and play equipment includes to be kept in a clean and in a safe condition.

Play- ground cursory inspections completed weekly (Parks Contractor) and in-depth inspections to NZS level bi-monthly (Council).

Hard surfacing to be kept clean, safe for users and weed free.

Litter control to be maintained to an appropriate level.

Toilet cleaning to be carried out to an appropriate level as per contract.

**Future development options:**

- Seal the grassed area left of the Ex Pirates building used for parking continuously being ripped up by vehicles in winter:



- Plant specimen trees around the Oval to provide shade;
- Seal the end of the road at the northern end of the SWS&E Centre:



- Install shelters over the picnic tables adjacent to the courts to provide shade;
- Remove the dilapidated farm fence north of fields 10 and 11;
- Set up the Park as a "Smart Playground". This provides opportunity through digital apps to either turn a normal park's open space into a digital fantasy land or make-believe scenarios where younger children use the play equipment to complete tasks under parent's supervision holding the phone. This creates a means to connect physical activity and the use of screens, providing a fun way for young children to be active;
- Collaborate with the Waikato Regional Council to remove the willow and broom from the Whakauru stream areas and plant riparian species;
- Install signage detailing historical information about the Tokoroa War Memorial Sportsground by the South Waikato Sports and Events Centre entrance.

